

RepliCase Hip™

Cement Spacer Mold

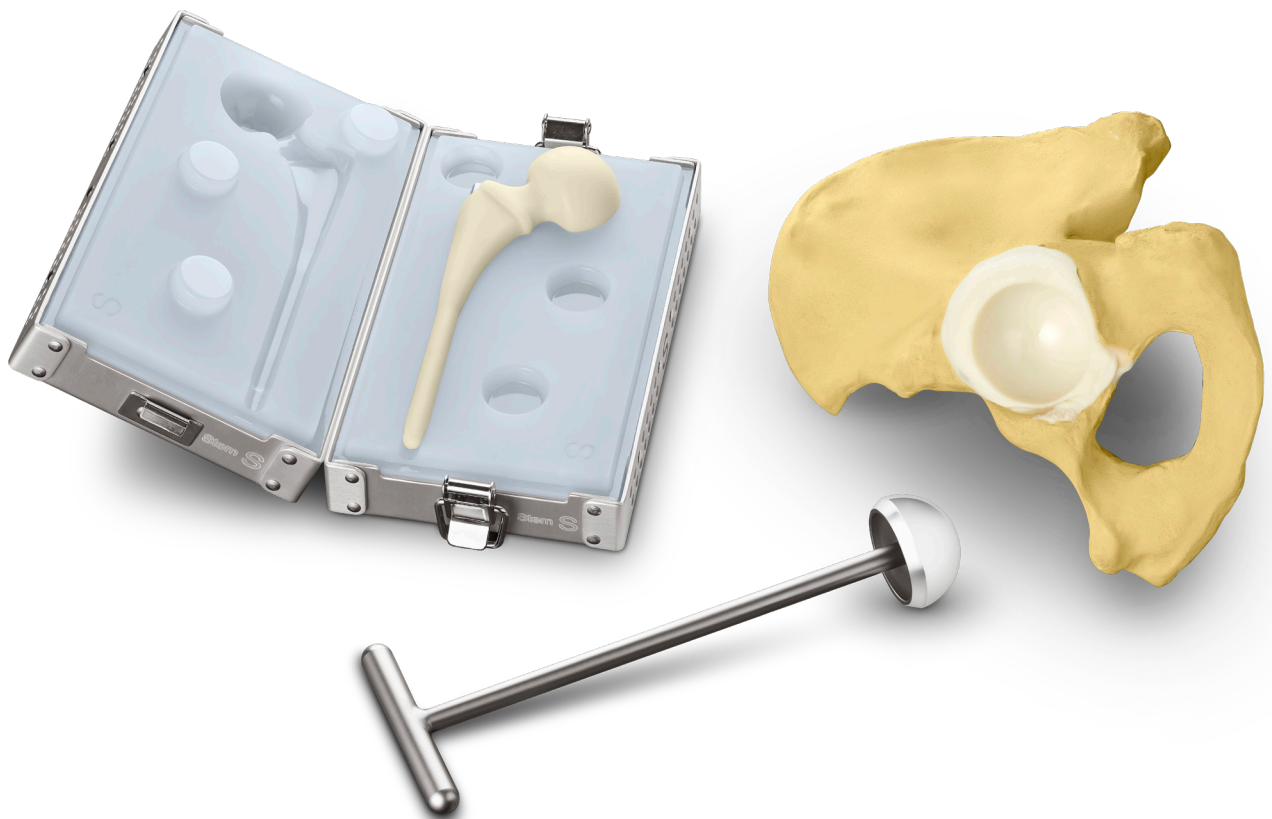


Table of Contents

Device Description	II
Product Overview	IV
Surgical Overview	VI
Surgical Protocol	
A. Size Selection.....	1
B. Bone Cement Preparation.....	1
C. Femoral Cement Spacer Shaping.....	2
D. Femoral Cement Spacer Materialization.....	2
E. Acetabular Spacer Cup Preparation.....	3
Appendix.....	4
Order Information	5

Device Description

RepliCase Hip –

The RepliCase Hip is used for molding a temporary hip prosthesis during surgery, and is intended to allow surgeons to model a temporary hip prosthesis in a simpler way. The reinforcement rod provides additional mechanical support.

INDICATIONS

The device is indicated for use to mold a temporary hip prosthesis for skeletally mature patients with the following conditions:

1. The first stage of temporary implantation of infected skeletally mature patients who need to undergo a two-stage total hip revision procedure.
2. Compliant patients who will consistently use traditional mobility assist device (e.g. crutches, walkers) throughout the implant period.
3. The molded temporary hip prosthesis is intended for an implantation period of 180 days or less.

Please refer to the package inserts for important product information, including, but not limited to contraindications, warnings, precautions, and adverse effects.



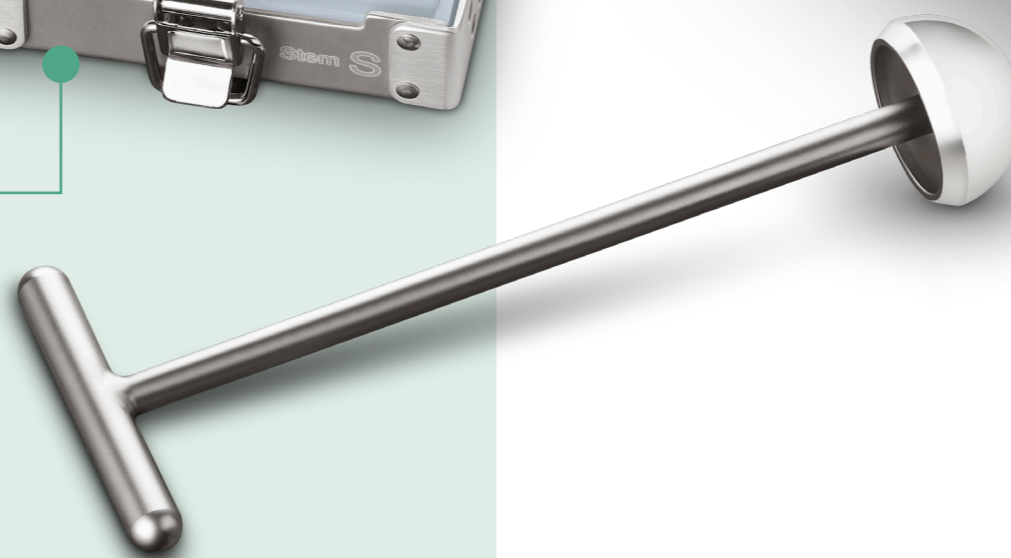
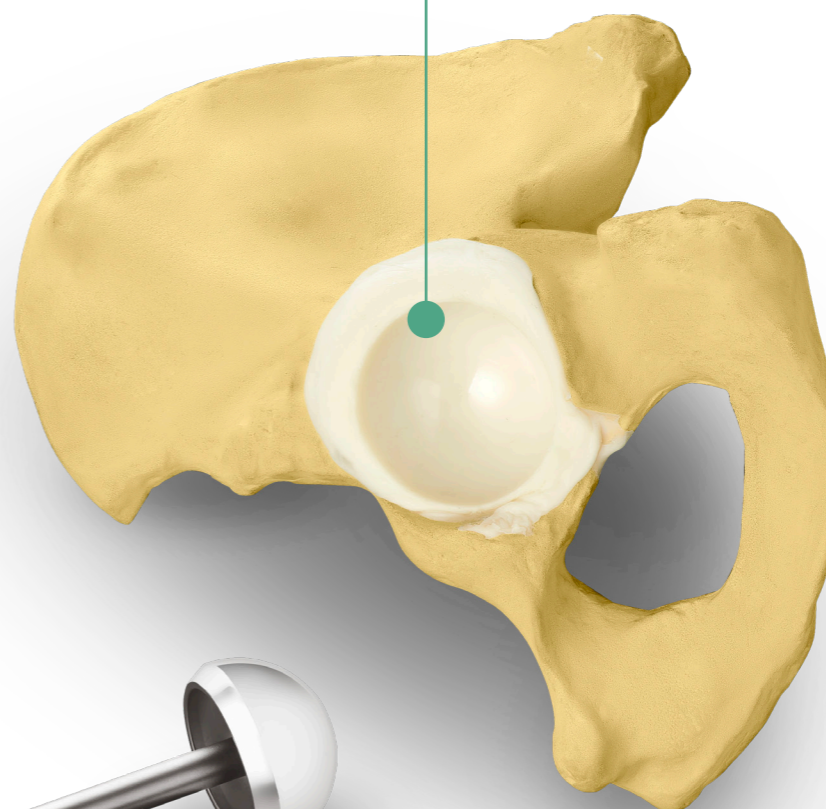
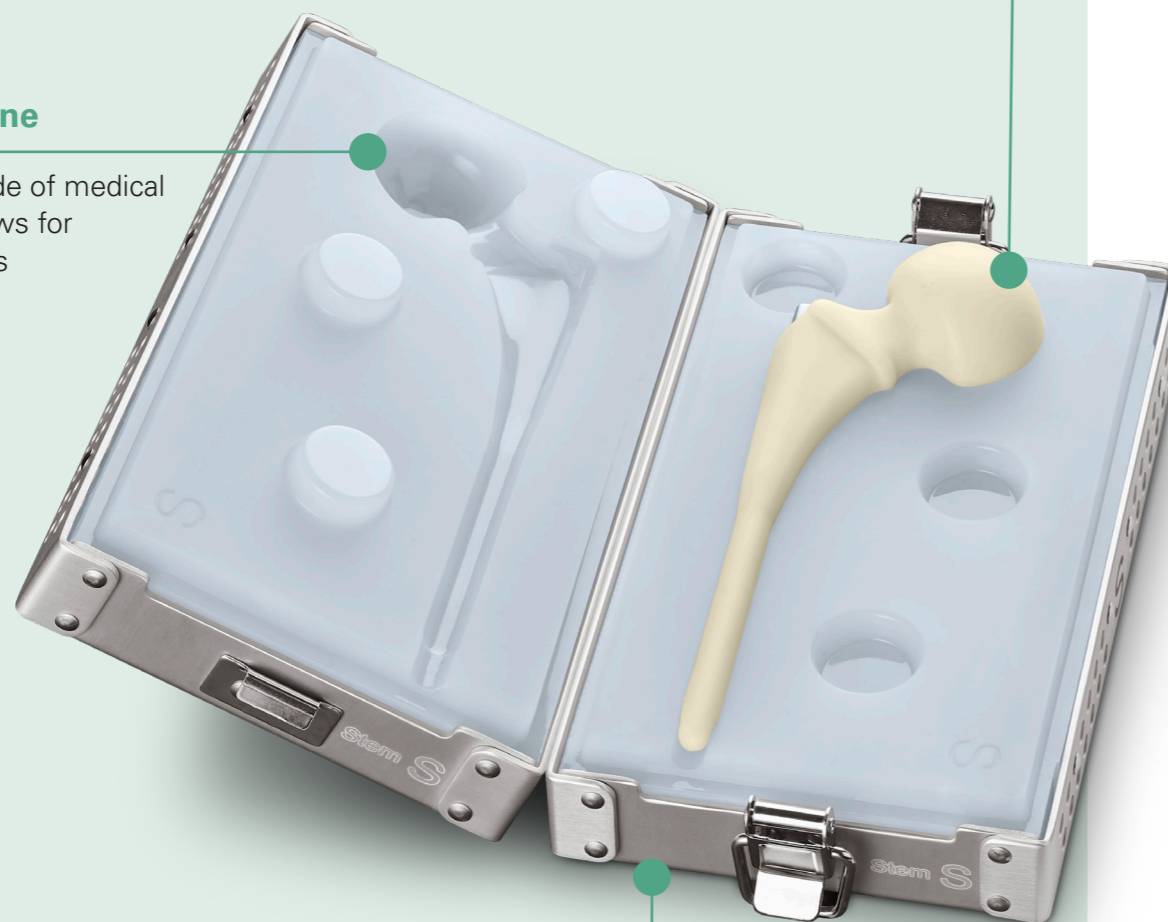
Product Overview

Medical Grade Silicone

- The RepliCase Hip is made of medical grade silicone which allows for repeated autoclave cycles

- Total hip spacer design helps provide a smoothly articulated surface intended to reduce wear particles and improve hip motion

- 3 available sizes (S,M,L)



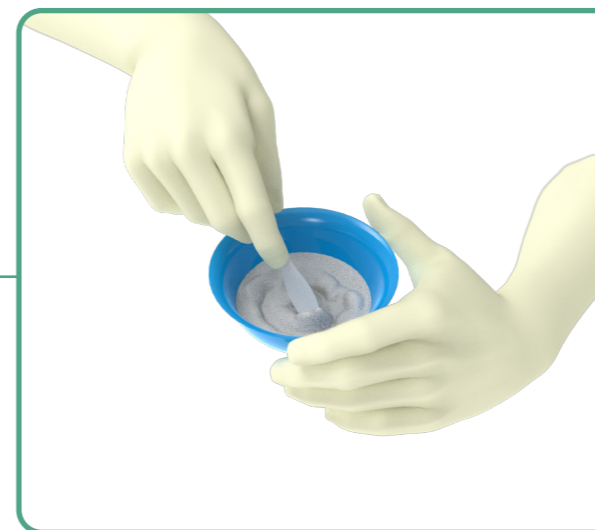
Reinforcement Rod

- Provides additional mechanical support

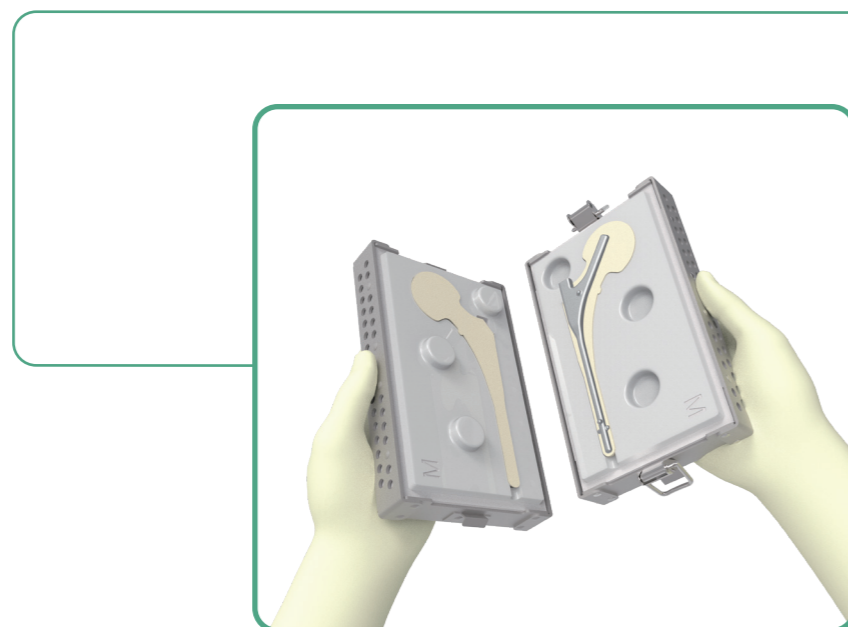
Surgical Overview



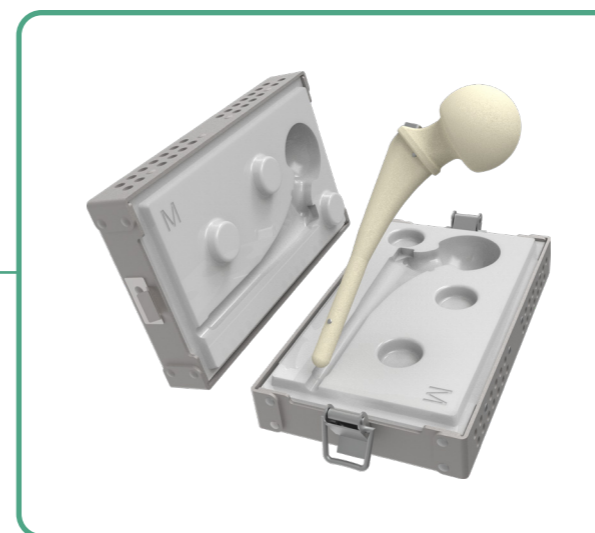
A. Size Selection



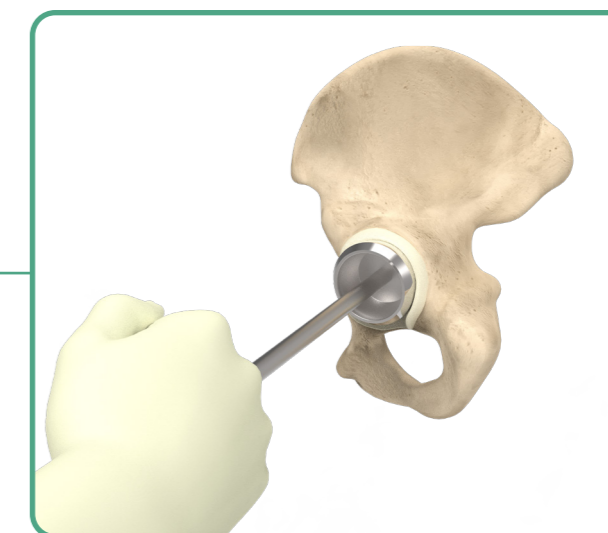
B. Bone Cement Preparation



C. Femoral Cement Spacer Shaping



D. Femoral Cement Spacer Materialization



E. Acetabular Spacer Cup Preparation

A. Size Selection

Measure the acetabular size and choose the proper size of **Cement Spacer Mold**.

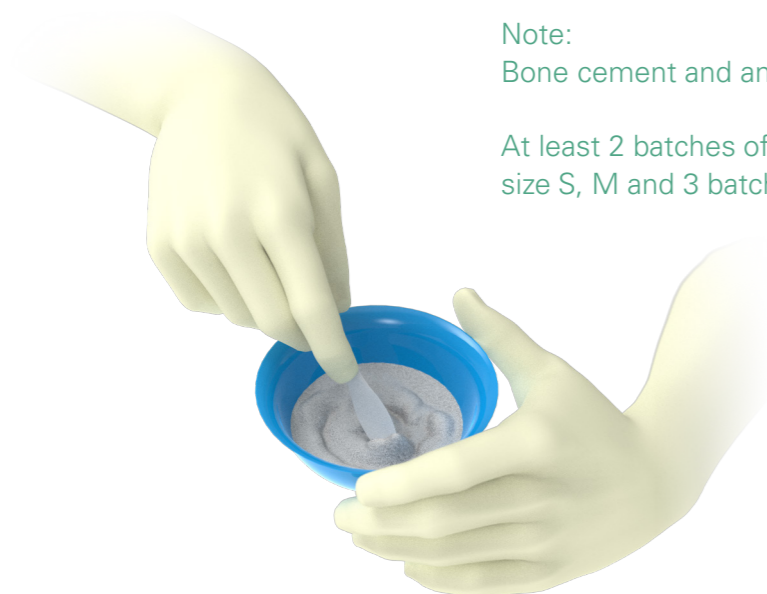
Measured Acetabular sizes (mm)	Hemiarthroplasty		Total Hip Type		
	44	46, 48	50, 52	54	56 or above
Cup Diameter (mm)	–	–	46	49	52
Spacer Cup Cement Mantle (each side)	–	–	2 or 3 mm	2.5 mm	2 mm or above
Head Diameter (mm)	42	45	42	45	48
Suggested sizes	S	M	S	M	L

Note:

For acetabular sizes under 50 mm, the acetabular spacer cup may not be necessary, size selection should be based on the head diameter.

B. Bone Cement Preparation

Prepare 80 to 120g of bone cement for a femoral spacer.



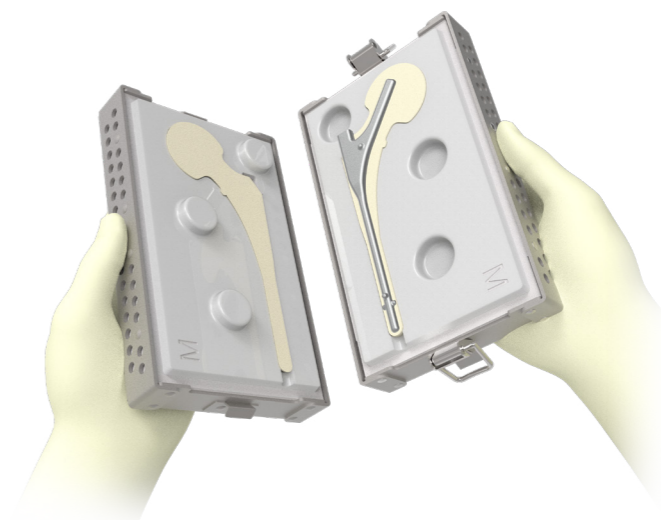
Note:

Bone cement and antibiotics are NOT provided.

At least 2 batches of bone cement should be utilized for size S, M and 3 batches of bone cement for size L.

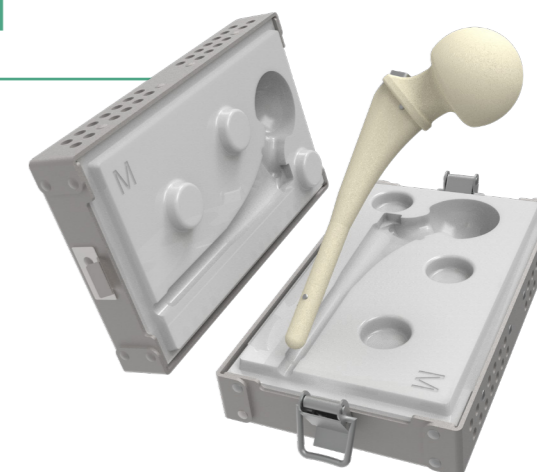
C. Femoral Cement Spacer Shaping

Fill the **Cement Spacer Mold** when bone cement is in the doughy stage. The Reinforcement Rod is recommended to enhance the mechanical strength.



D. Femoral Cement Spacer Materialization

Close and secure the lid of the mold and wait until bone cement is thoroughly hardened. Remove spacer from silicone mold and trim the excess cement around the spacer.



Instruments

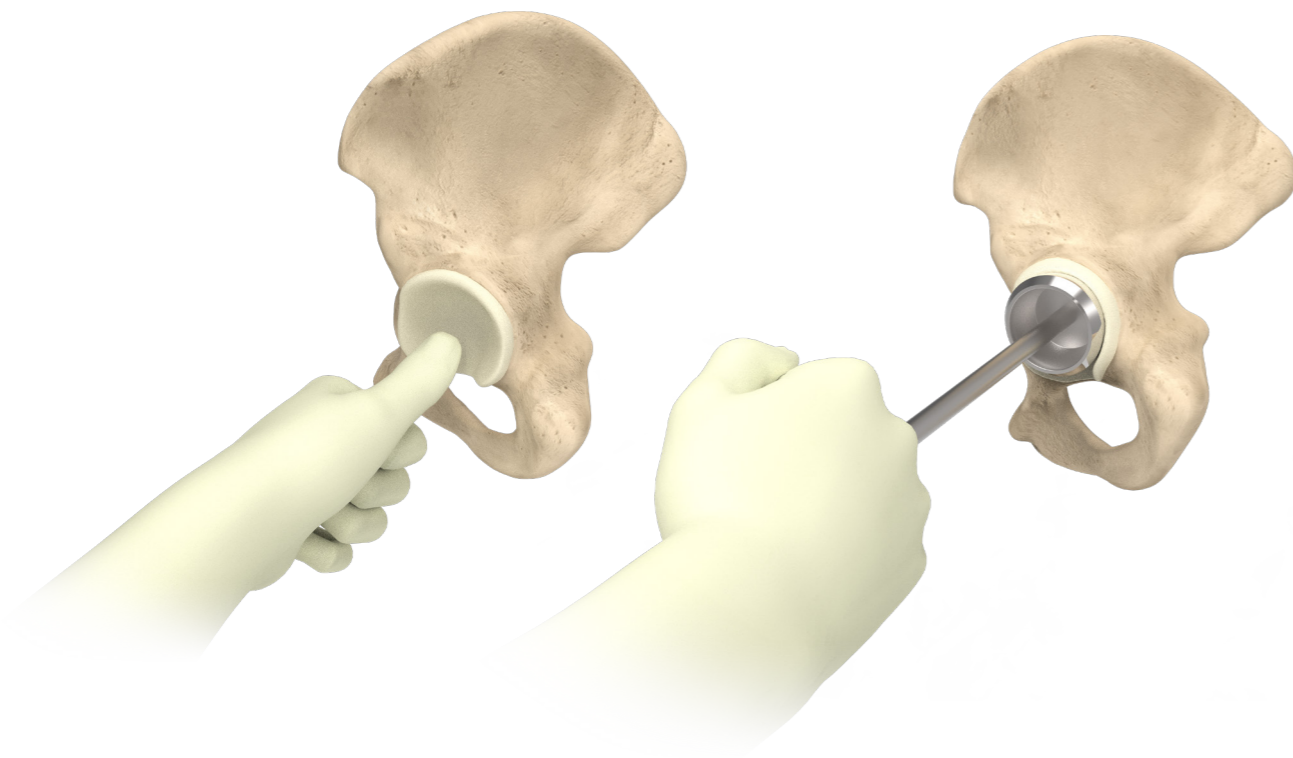


Cement Spacer Mold

E. Acetabular Spacer Cup Preparation

Prepare additional one bone cement for acetabular spacer cup.

When cement is in the doughy stage, finger tap the cement into acetabulum. Connect **Acetabular Cup Molder** to the **Handle** and shape the cement to form spacer cup.



Instruments



Acetabular Cup Molder

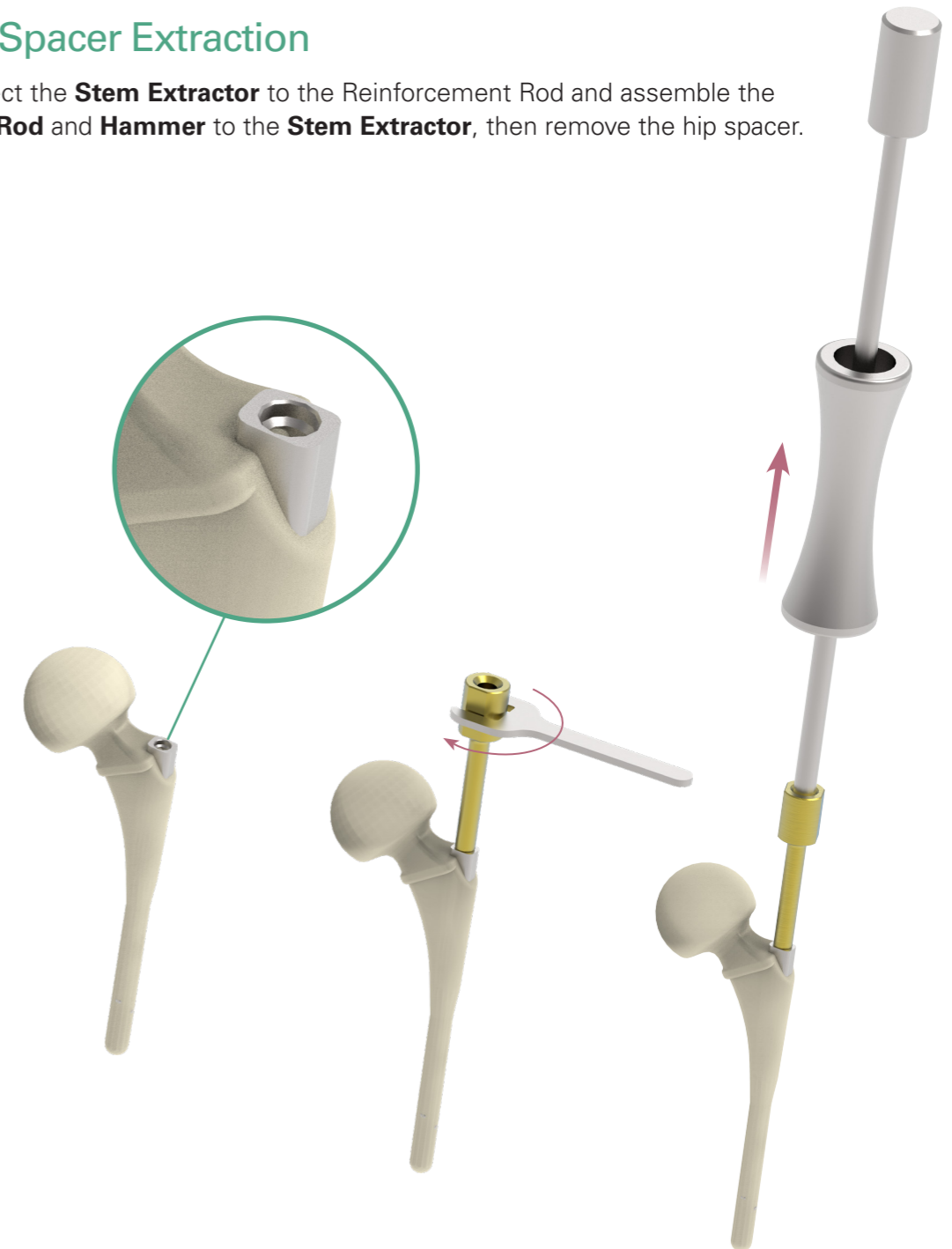


Acetabular Cup Molder Handle

Appendix

Hip Spacer Extraction

Connect the **Stem Extractor** to the Reinforcement Rod and assemble the **Slide Rod** and **Hammer** to the **Stem Extractor**, then remove the hip spacer.



Instruments



Hammer



Stem Extractor Wrench



Slide Rod

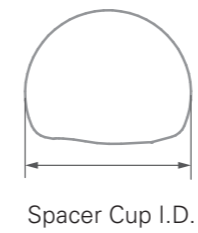
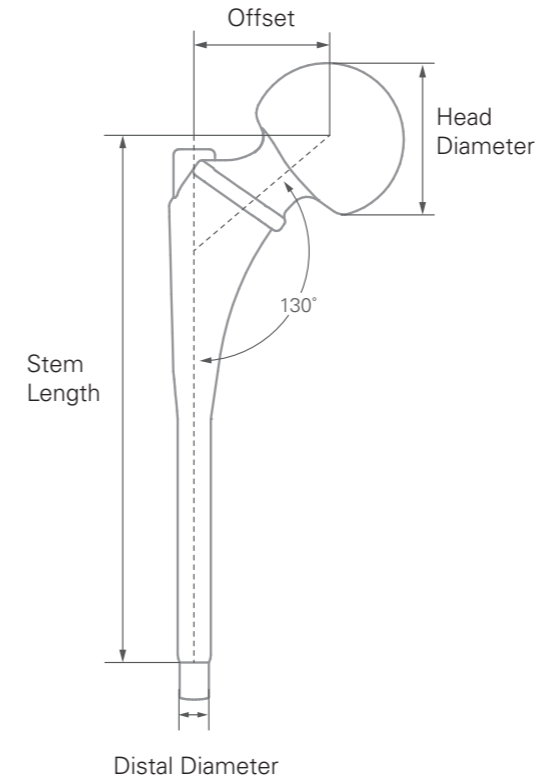


UTF Stem, reduced, extractor

Order Information

Special Order Items

	Catalog Number	Outer Diameter (mm)
	1910 - 1010	Reinforcement Rod
	9909 - 5009	Cement Spacer Mold S, 42 mm
	9909 - 5010	Cement Spacer Mold M, 45 mm
	9909 - 5011	Cement Spacer Mold L, 48 mm
	9909 - 8110	Replicase Cement Mold Case
	9909 - 1101	Acetabular Cup Molder Handle
	9909 - 5046	Acetabular Cup Molder, 46 mm
	9909 - 5049	Acetabular Cup Molder, 49 mm
	9909 - 5052	Acetabular Cup Molder, 52 mm



Dimensions

Size	S	M	L
Acetabular Size	50, 52	54	56 or above
Spacer Cup I.D.	46	49	52
Head Diameter	42	45	48
Offset	36	39	43
Head Neck Angle	130°	130°	130°
Stem Length	145	145	145
Distal Diameter	9	10	11

Unit: mm

The special order items are only sold in certain area, please contact with local distributor for further information.

Please note that this Surgical Technique Guide has been authored in the English language. Any translations into other languages have not been reviewed or approved by United Orthopedic Corporation and their accuracy cannot be confirmed. Any translated guide should be reviewed carefully prior to use and questions regarding a Surgical Technique Guide should be directed to United Orthopedic Corporation at unitedorthopedic.com/contact

The CE mark is valid only if it is also printed on the product label.

